



PERIMETER INTRUSION DETECTION SYSTEM

CPNI-APPROVED

3-METRE HIGH PALISADE WITH WELDED
MESH BACKING AND WITH OR WITHOUT
BARBED TAPE CONCERTINA

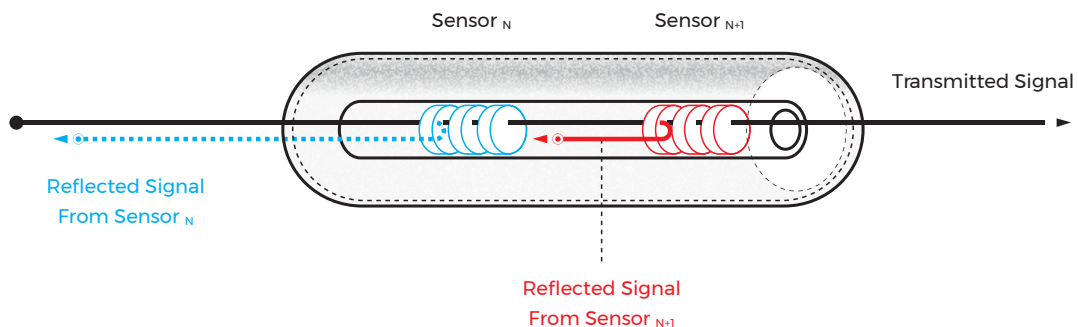
Fence-Mount PIDS

AgilFence Perimeter Intrusion Detection System by ST Electronics is a solution designed and developed in Singapore for fence security, offering highly accurate and reliable detection while maintaining low false alarm rates in actual environment.

How It Works

These extremely sensitive fibre sensors are able to sense the slightest disturbances to the physical perimeter while maintaining low false alarm rates in various scenarios. These sensors have unique characteristics under normal conditions, where each reflects a specific pattern back to the system. Any type of intrusion will affect the steady state and change the pattern that is being reflected back to the system, which will translate into an intrusion alert.

Discrete Fibre Sensor



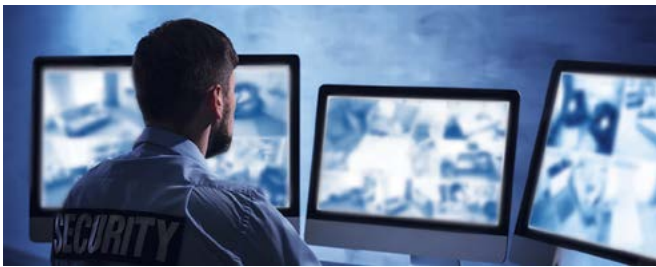
Operational Concept



An intruder attempts to breach the perimeter by cutting or scaling the fence. When the fence panel is disturbed, an alert will be triggered to the operations centre.



The nearest strategically placed CCTV on the perimeter is automatically activated to verify the intrusion with pin-point accuracy.



The security response team is quickly activated and dispatched to the precise intrusion locations.



The intruder is apprehended before any damage is done. The entire process is monitored by the operations centre.

Performance Specifications

Probability of Detection	$\geq 95\%$
Detection Accuracy	$\pm 5\text{ m}$
Detection Resolution	20 m
False Alarm Rate (Average)	$\leq 3\text{ per day per kilometre in real environment}$
Resilient to Defeat	<i>Detects tampering and immune to cuts. The cable is able to sustain multiple cuts while maintaining operation</i>

Technical Specifications

Technology	<i>Fibre optic cable embedded with discrete fibre sensors</i>
Power Consumption	<ul style="list-style-type: none"> • Sensing Unit: 45 W typical (4-channel, 8-channel, 16-channel) • Signal Processing Unit: 460 W • No power needed outdoor
Environmental Specs	<ul style="list-style-type: none"> • UV-resistant and armour-protected sensor cable • UV-resistant cable tie • Sensing Unit & Signal Processing Unit operate in air-conditioned room
Product Life	<ul style="list-style-type: none"> • 10 years • A comprehensive warranty program and extension option available
Integration	<i>Integrate with new/existing ISMS & CCTV networks</i>